

Instructions for Easy Mobile Remote for Android & iOS tablets & smartphones

Video Instruction: <https://youtu.be/gUacF9lfecY>

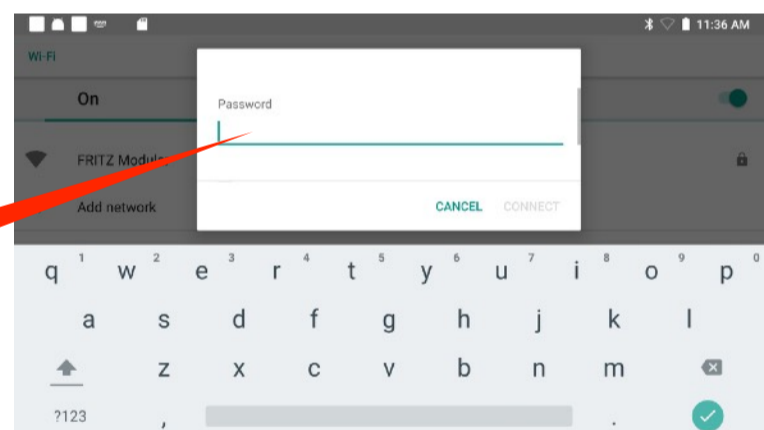


1) Bring the VR glasses into the WIFI

- In the main menu, click on the WIFI symbol with the green laser beam at the bottom left

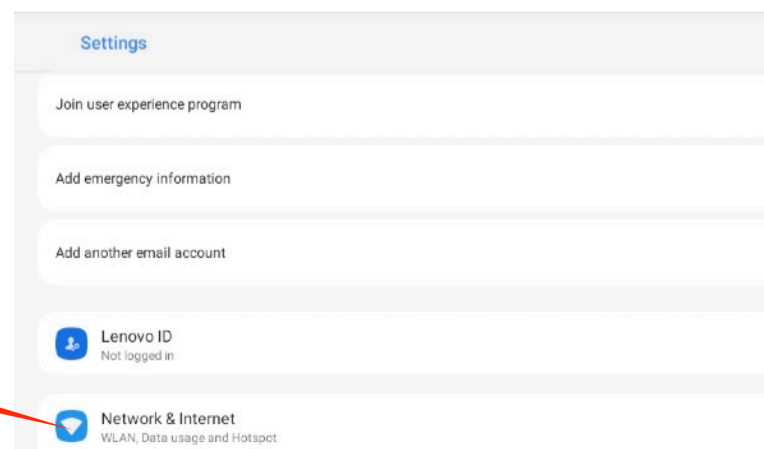


- In the WIFI menu, enter the WIFI password on the virtual keyboard and press "CONNECT"



2) Bring the tablet or smartphone into the WIFI

- Enter the WIFI password in the tablet under "Settings" under "Network & Internet"



3) Download the Remote App from App Stores:

Android



[download from Google Play Store](#)

iOS

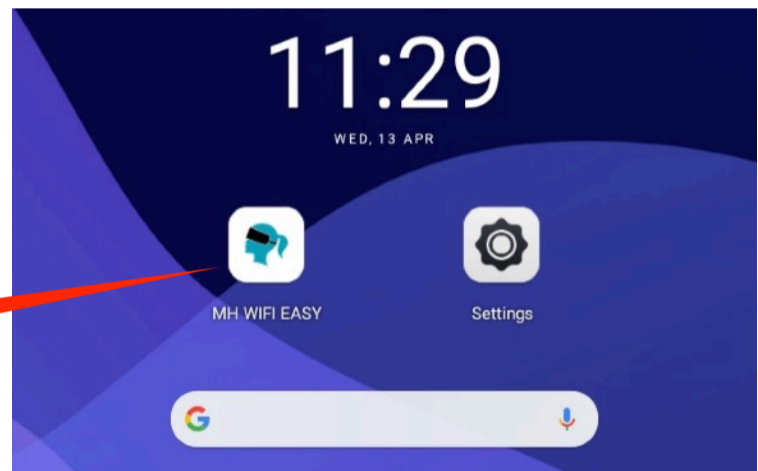


[download from Apple Store](#)

4) On the tablet or smartphone

- Start the Magic Horizons app

MH app

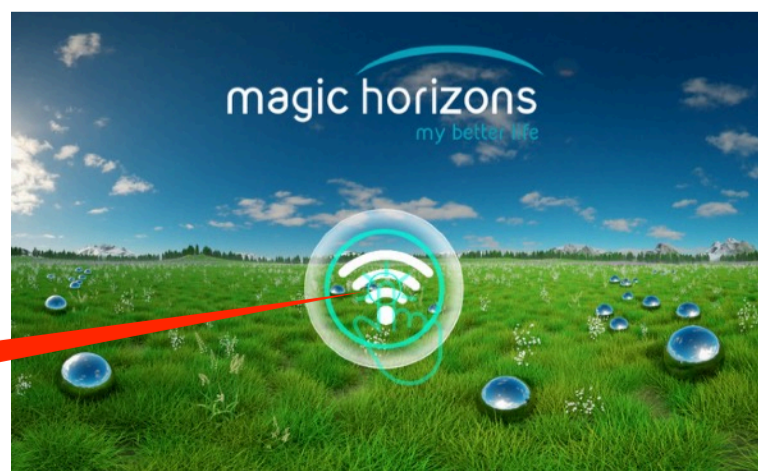


- Choose whether you want to connect one pair of glasses or several pairs of glasses



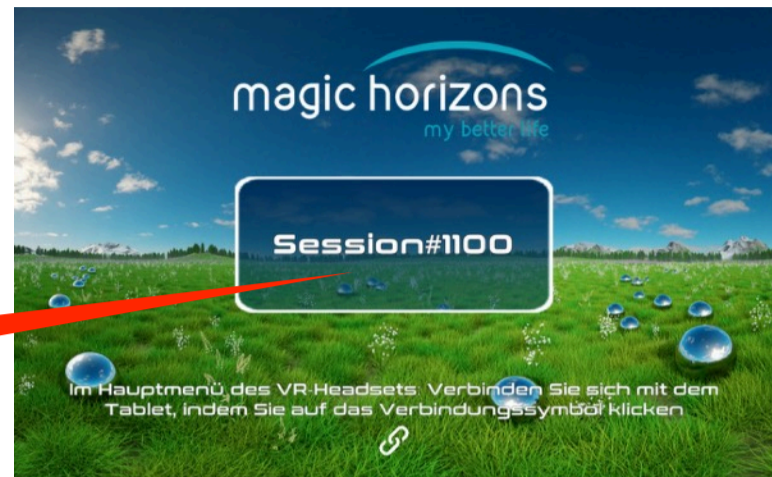
- Click on the flashing WIFI icon to connect

Connect



- A session number is automatically created on the tablet or smartphone

Session
Nr.



5) In the VR glasses

- Click on the "connect" icon with the green laser beam

Connect



- In the list of sessions, the same session number appears as on the tablet / smartphone. If several VR glasses and tablets or smartphones are used, the appropriate session numbers must be selected

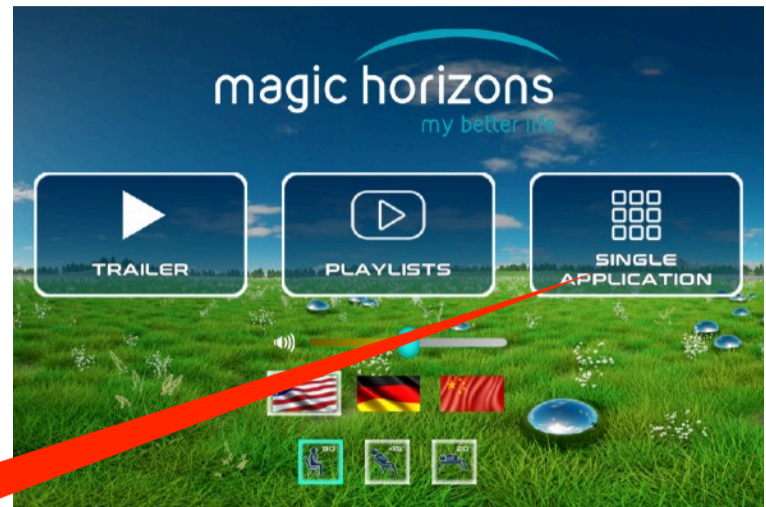
Session
Nr.



- VR glasses and tabletop smartphone are now connected. VR glasses are now controlled by the tablet or smartphone.

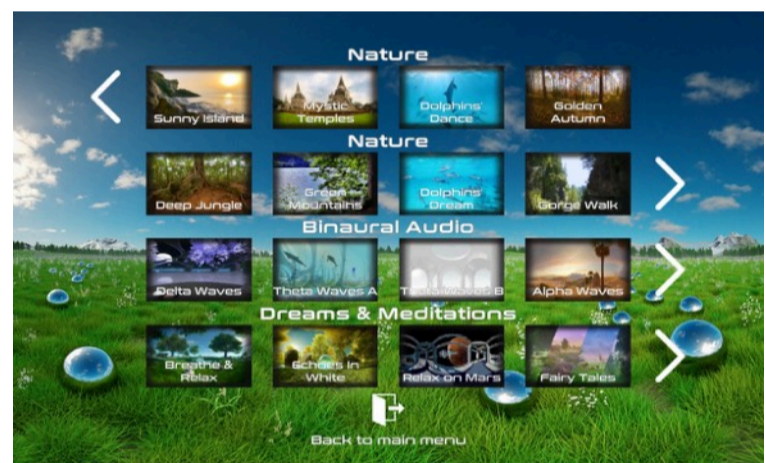
6) Tablet & phone operation

- In the tablet main menu, you can choose between the trailer, the Playlists and the Single Applications, set the language, volume and the sitting/lying position

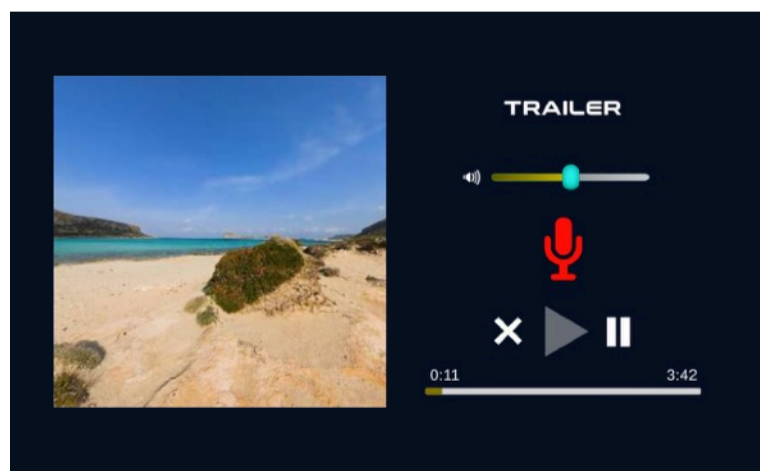


Single application

- The individual VR applications are started in the Single Application menu
- Use the white arrows to scroll to more VR applications
- Clicking on the white door symbol at the bottom takes you back to the main menu



- After clicking on a VR application, it starts and you are in the playback menu
- There you can adjust the volume, pause, see a video that shows what is happening in the VR glasses and see the remaining time
- Clicking on the "X" symbol ends the running VR application and you are back in the Single Application menu



Magic Horizons GmbH

Lohweg 35, 85375 Neufahrn, Germany
E-Mail: support@magic-horizons.com
Web: www.magic-horizons.com